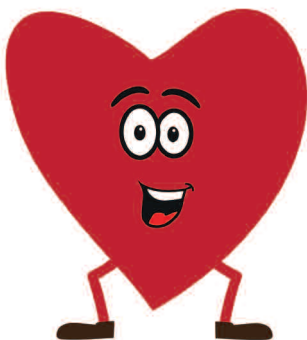
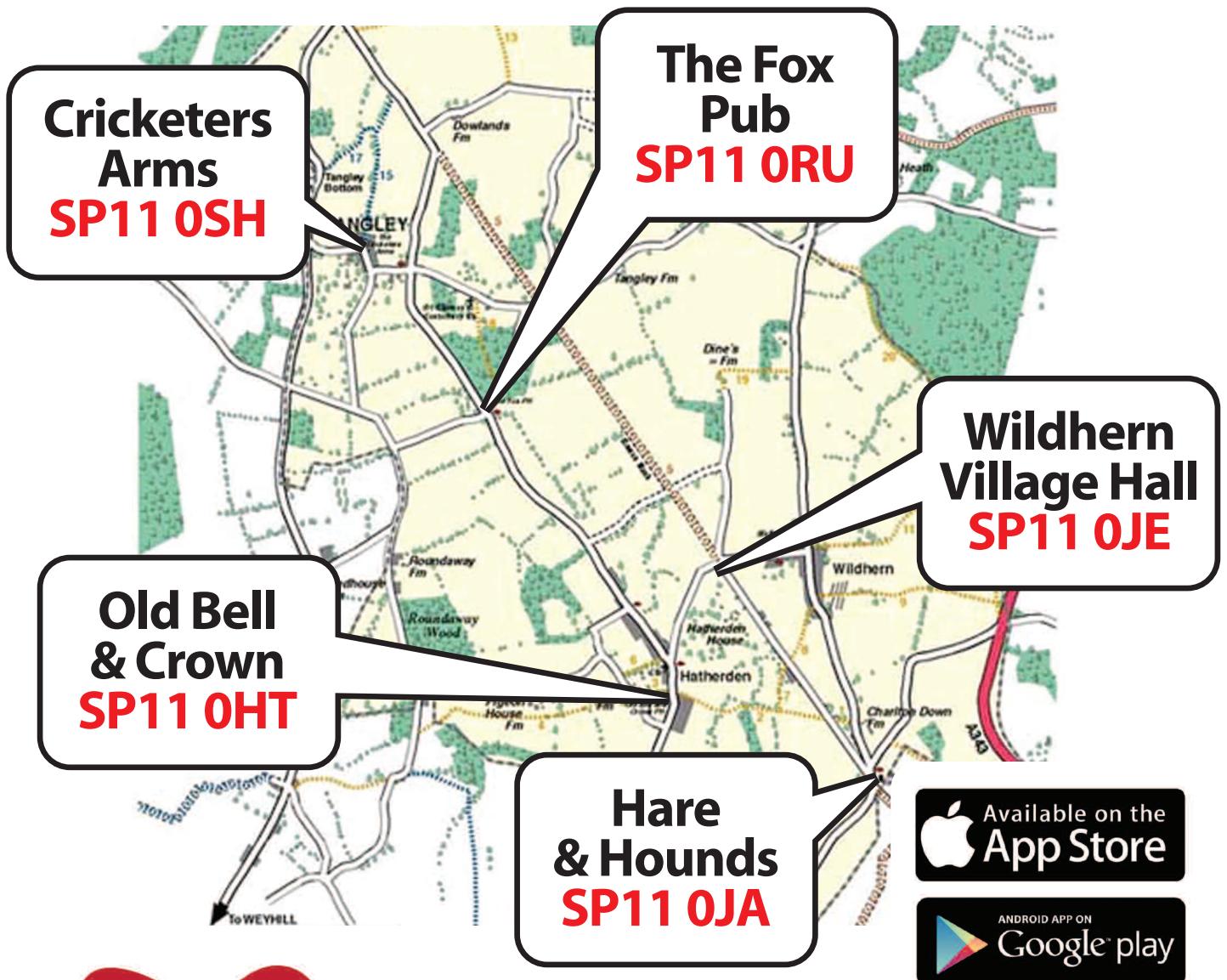


Locations for Tangley Parish Automated External Defibrillator (AED)

The purpose of this leaflet is to create awareness of the five defibrillators deployed within our parish and their locations.

Please take time out to familiarise each member of your household with the location of the nearest AED to your dwelling.

Each device is located at a local landmark and we highly recommend you visit the site so that you know its exact location on the exterior of the building.



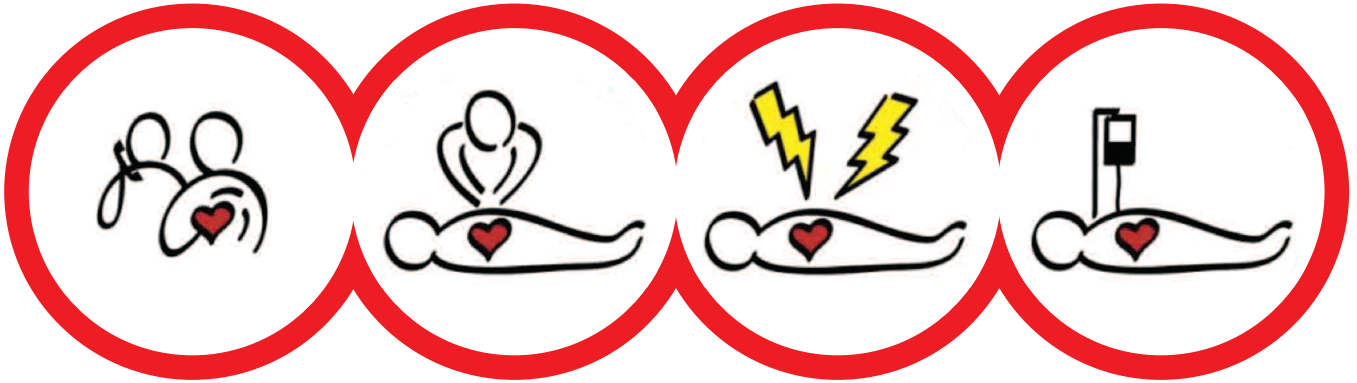
Save a Life Where is your nearest AED?

Download the Android and Apple app.
Uses GPS functionality to show where the nearest AED is as well as a list of other AED's in your area

Defibrillators Save Lives

Early Access

Early Defibrillation



Early CPR

Early Advanced Care



AED Cabinet



****AED pack
Found inside the cabinet**



Keypad coded Lock

** The AED pack is for illustration only and may vary slightly from the AED's deployed
- #four of the five cabinets are of this design. The cabinet at The Old Bell & Crown is slightly different

IMPORTANT NOTE: Each cabinet has a keypad lock fitted. The code can only be obtained from the Ambulance Services Operator when you dial 999 to register your emergency. The services operator will require your postcode and will advise you as to where the nearest AED is located and its code.